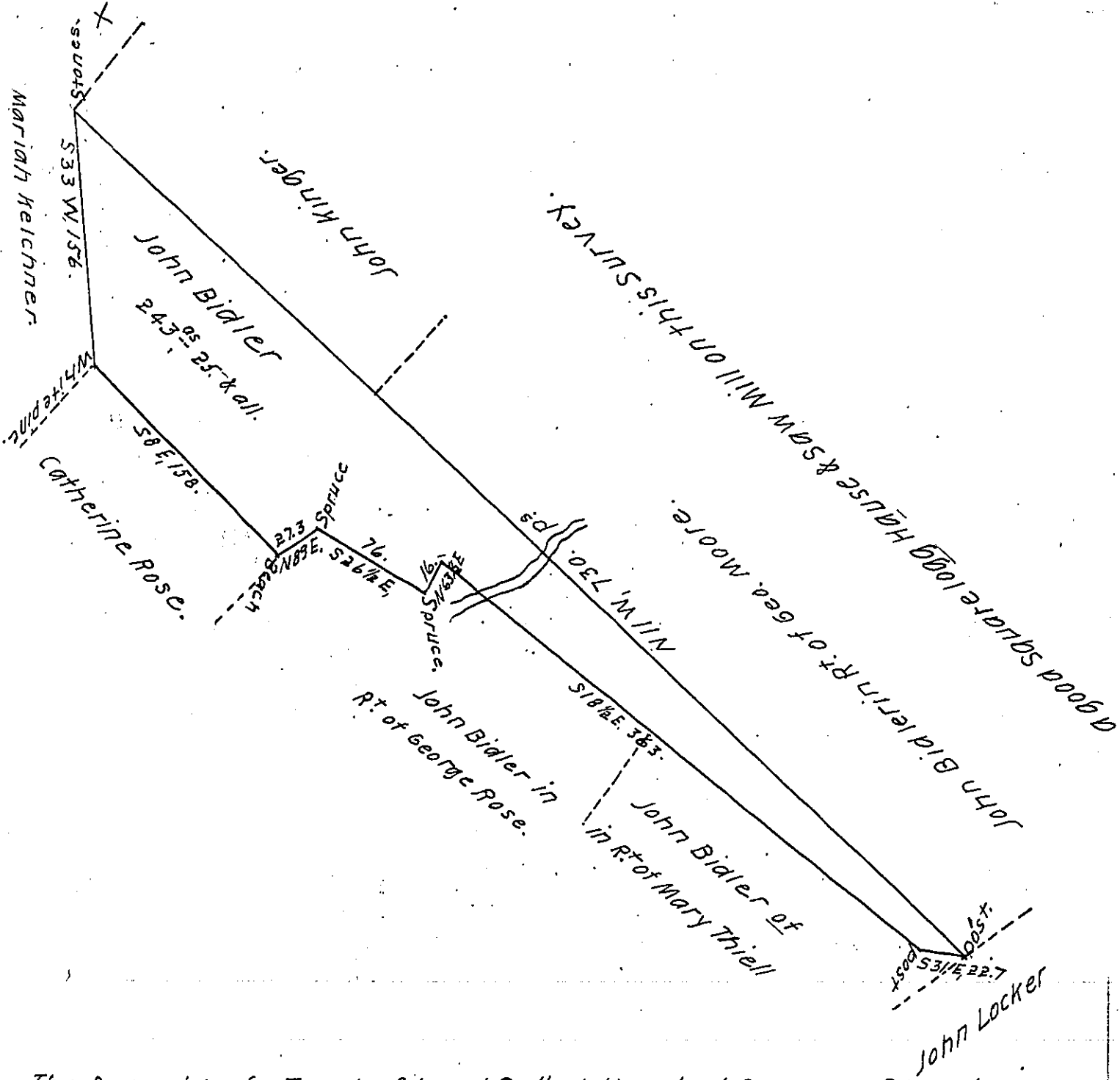


FORM NO. 1.



The Draught of a Tract of Land, Called Hemlock Swamp, Situate in  
 Mittlin Township in the County of Northumberland Adjoining Lands  
 of George Moore, Mary Thiell, & others, Containing two hundred forty  
 three Acres & twenty five <sup>perches</sup> & the usual allowance of six per Cent  
 for Roads & Surveyed on the 11<sup>th</sup> Day of May 1811. unto John Bidler  
 by virtue of his Warrant bearing Date on the 9<sup>th</sup> Day of April  
 1811.

Tho<sup>s</sup> Woodside D.S.

To Andrew Porter Esquire Surveyor General

IN TESTIMONY that the above is a copy of the original remaining on file in  
 the Department of Internal Affairs of Pennsylvania, made  
 conformably to an Act of Assembly approved the 16th day of  
 February, 1833, I have hereunto set my Hand and caused  
 the Seal of said Department to be affixed at Harrisburg,  
 this fifteenth day of May, 1911.

*Henry Houck*  
 Secretary of Internal Affairs.